

DO IT RIGHT...



...RACE WITH THE LEGEND

HPx™

SILVER & GOLD SERIES

Needle-Bearing & EZ-Roll Bushing Hydraulic Roller Lifters!

ISKY has partnered with Johnson® Lifters of Taylor, Michigan (the premier Hydraulic-Roller Lifter manufacturer in the country) to offer the “Best on the Planet”



HPx™ Series. The absolute Highest Quality, Hi-Performance Hydraulic Rollers available today for the following engine applications. 100% Made In The U.S.A.

THE WORLD'S BEST LS ROLLER LIFTERS

Part No.	Application	Pushrod	Silver Series Needle Bearings	Max Spring/Loads Seat/Open	RPM Limit
2076-HYRT	LS-1 Chevy V8	203-HG-.180"	7.600"	185/535#	7500 RPM

Part No.	Application	Pushrod	Gold Series EZ-Roll Bushings	Max Spring/Loads Seat/Open	RPM Limit
2078-HYRT	LS-1 Chevy V8	203-HG-.180"	7.600"	185/535#	7500 RPM

“B-HIVE™” Form Valve Springs:

We are now offering two high performance “B-HIVE™” Valve Springs that are “drop-in” replacements for the Stock LS-1 “B-HIVE™” spring. Both Springs are compatible with stock retainers and locks... but we highly recommend for increased performance, the use of our 135-ST steel retainer and VL-500 Machined Bead Locks (see below).

Part No.	“Top” Retainer End OD/ID	“Bottom” Locater End OD/ID	Mat'l	Seat Press	Open Press	Rate Per Inch	Coil Bind	Max Net Lift	Retainer & Lock Combo Part No.
165-A	$\frac{1.055}{.660}$ "	$\frac{1.290}{.885}$ "	Super clean Chrome Silicon OVATE Wire	130 Lbs. @1.800"	320 Lbs. @1.200"	310	1.140"	.600"	135-ST VL-500
195-A	$\frac{1.015}{.630}$ "	$\frac{1.290}{.905}$ "	“Tool Room” Mat'l/Specially Processed Round wire	120 Lbs. @1.800"	360 Lbs. @1.175"	380	1.100"	.625"	135-ST VL-500
1516	$\frac{1.015}{.640}$ "	$\frac{1.290}{.905}$ "	“Tool Room” Mat'l/Specially Processed Round wire	150 Lbs. @1.800"	420 Lbs. @1.140"	409	1.080"	.660"	135-ST VL-500



LS-1 Dual Valve Springs:

When looking for the increased reliability of a “Drop-In” Dual Valve Spring (No Machining Required) our High Quality 4905 is manufactured from Hi-Tensile, Chrome Silicon Alloy and will accommodate Hydraulic Roller Cams up to .650” Valve Lift comfortably. When converting from the stock Beehive to the 4905 Dual Springs, it is also required to use our matching 185-ST Steel Retainers, 185-VSL Spring Locaters and IVS-400 Oil Seals.



PART NUMBER										
Valve Springs	Steel Retainers	Spring Locaters	Valve Seals	Outer OD/ID	Inner OD/ID	Seat Press	Open Press	Rate Per Inch	Coil Bind	Max Net Lift
4905	185-ST	185-VSL	IVS-400	$\frac{1.290}{.940}$ "	$\frac{.940}{.690}$ "	125 lbs. @1.800"	360 lbs. @1.150"	360	1.065"	.650"

Hydraulic Roller Camshafts – Deep Hardened Steel Billet

V-8 350 Cu. In. LS-1 Engines (1997 up) 3-Bolt

Small Block (Also Vortec 1999-Up 4800-5300, 6000 Series)

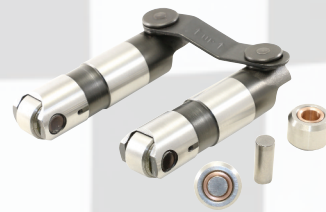


Part No. Cam Only	Grind No./Type	APPLICATION	RPM-Range	Valve Lift INT./EX.	Valve Lash Hot INT./EX.	ADV. Duration INT./EX.	.050 Duration INT./EX.	Lobe Center
271252/257	RR-252/257 HYDRAULIC ROLLER	Best overall cam for towing. Trucks, Vans, R.V., etc. Broad torque band. Good vacuum. 3.55-4:10 axle ratio. 9.5:1 compr. Computer compatible. Smooth idle.	1200-5000	.495 .510	.000 .000	252° 257°	206° 212°	113°
271257/265	RR-257/265 HYDRAULIC ROLLER	Excellent performance cam with good vacuum, good idle. 3.08-3.73 axle ratio, 9.5:1 compr. Up to 650 CFM Carb. Computer compatible. Stock converter.	1400-5600	.510 .530	.000 .000	257° 265°	212° 220°	113°
271265/275	RR-265/275 HYDRAULIC ROLLER	Good mid-range power. Good vacuum & good idle. 3.23-3.70 axle ratio. 9.5-10.5:1 compr. Computer compatible with stage 1 chip. Stock converter. Up to 650 CFM Carb.	2000-6000	.530 .550	.000 .000	265° 275°	220° 230°	113°
271280/290	RR-280/290 HYDRAULIC ROLLER	Excellent mid-range performance. Fair idle. 2500 stall. 3.70-4.00 axle ratio. Up to 10.5:1 compr. Up to 750 CFM Carb.	2500-6800	.530 .540	.000 .000	280° 290°	232° 242°	113°
271260	RR-260 HYDRAULIC ROLLER	STAGE 1 TURBO	1500-5500	.561	.000	260°	212°	112°
271260/266	RR-260/266 HYDRAULIC ROLLER	Great torquey low end performance street cam with wide power band and good drivability.	1600-6600	.561 .570	.000 .000	260° 266°	212° 218°	114°
271269/276	RR-269/276 HYDRAULIC ROLLER	High Performance street with, good torque with choppy idle. Stock Converter.	1800-6700	.575 .585	.000 .000	269° 276°	221° 227°	114°
271276/285	RR-276/285 HYDRAULIC ROLLER	High Performance street & strip with great torque, rough idle. 2500 Stall.	2300-7000	.573 .578	.000 .000	276° 285°	229° 240°	114°
271272/278	RR-272/278 HYDRAULIC ROLLER	Higher RPM street & strip performance with choppy idle. 2000 Stall.	1800-6800	.578 .592	.000 .000	272° 278°	224° 230°	114°
271274/280	RR-274/280 HYDRAULIC ROLLER	High Performance street & strip with very broad power band for better breathing engine.	2000-7000	.608 .612	.000 .000	274° 280°	224° 230°	114°
271280/286	RR-280/286 HYDRAULIC ROLLER	For Cathedral Port Headed LS engines. Mid-range torque, broad power band.	2000-7000	.612 .615	.000 .000	280° 286°	230° 236°	114°
271286/292	RR-286/292 HYDRAULIC ROLLER	For Cathedral Port Headed LS engines. High end torque, higher RPM.	2200-7100	.615 .620	.000 .000	286° 292°	236° 242°	114°
271278/291	RR-278/291 HYDRAULIC ROLLER	For Cathedral Port Headed LS engines. High end torque, higher RPM.	2200-7300	.632 .632	.000 .000	278° 291°	234° 247°	114°
271282/294	RR-282/294 HYDRAULIC ROLLER	High performance, broad power band race engine only for use with aftermarket rectangular port heads.	2400-7400	.632 .632	.000 .000	282° 294°	239° 251°	114°
271286/302	RR-286/302 HYDRAULIC ROLLER	High performance, high RPM race engine only for use with aftermarket rectangular port heads.	2600-7400	.632 .632	.000 .000	286° 302°	243° 259°	114°
271274/278	RR-274/278 HYDRAULIC ROLLER	STAGE 2 TURBO	2500-6500	.612 .585	.000 .000	274° 275°	222° 227°	114°
271280/284	RR-280/284 HYDRAULIC ROLLER	STAGE 3 TURBO	3000-7000	.612 .598	.000 .000	280° 284°	230° 236°	114°

NOTE: Single bolt is available on special order.

HPx™

SILVER & GOLD SERIES Needle-Bearing & EZ-Roll Bushing Hydraulic Roller Lifters!



SILVER

PERFORMANCE LEVEL

GOLD

HPx™ SILVER SERIES - NEEDLE-BEARING

Part No.	Application	Pushrod	Max Spring/Loads Seat/Open	RPM Limit
2076-HYRT	LS-1 Chevy V8	203-HG-180"	185/535#	7500 RPM
2077-HYRT	Small Block Chevy V8	203-HG-.460"	185/535#	7500 RPM
3977-HYRT	Big Block Chevy V8	203-96-.500"	185/535#	7500 RPM
2477-HYRT	409 Chevy V8	8.350" int/8.700" ex	185/535#	7500 RPM
3177-HYRT	Big Block 429-460 Ford V8	203-HG Plus .300"	185/535#	7500 RPM
3877-HYRT	Small Block 289-302 351 Ford V8	203-HG Minus .100"	185/535#	7500 RPM

HPx™ GOLD SERIES - EZ-ROLL BUSHING

Part No.	Application	Pushrod	Max Spring/Loads Seat/Open	RPM Limit
2075-HYRT	Small Block Chevy V8	203-HG -.460" (7.320)	185/535#	7500 RPM
2078-HYRT	LS-1 Chevy V8	203-HG -.180" (7.600)	185/535#	7500 RPM
3975-HYRT	Big Block Chevy V8	203-96 Minus .500"	185/535#	7500 RPM
3175-HYRT	Big Block 429/460 Ford V8	203-HG Plus .300" (8.100)	185/535#	7500 RPM
3875-HYRT	Small Block 289/302 351 Ford V8	203-HG Minus .100" (7.700)	185/535"	7500 RPM

HYDRAULIC ROLLER CAMSHAFTS—DEEP HARDENED STEEL BILLET • V-8 265-283-302-307-327-350-400 cu. in. engines (1957-87) small block

Part No. Cam Only	Grind No./Type	APPLICATION	RPM-Range	Valve Lift INT./EX.	Valve Lash Hot INT./EX.	ADV. Duration INT./EX.	.050 Duration INT./EX.	Lobe Center
201252/257	RR-252/257 HYDRAULIC ROLLER	Best overall cam for towing. Trucks, Vans, R.V., etc. Broad torque band. Good vacuum. 3.55-4:10 axle ratio. 9.5:1 compr. Computer compatible. Smooth idle.	1200-5000	.450 .465	.000 .000	252° 257°	204° 209°	112°
201257/265	RR-257/265 HYDRAULIC ROLLER	Excellent performance cam with good vacuum, good idle. 3.08-3.73 axle ratio, 9.5:1 compr. Up to 650 CFM Carb. Computer compatible. Stock converter.	1400-5600	.465 .485	.000 .000	257° 265°	209° 217°	112°
201265/272	RR-265/272 HYDRAULIC ROLLER	Good mid-range power. Good vacuum & good idle. 3.23-3.70 axle ratio. 9.5-10.5:1 compr. Computer compatible with stage 1 chip. Stock converter. Up to 650 CFM Carb.	2000-6000	.485 .505	.000 .000	265° 272°	217° 225°	112°
201272/282	RR-272/282 HYDRAULIC ROLLER	Good all around performance. Good idle & vacuum. 3.70-4.11 axle ratio. 9.5-10.5:1 compr. Computer compatible with stage 1 or 2 chip. Stock converter.	2500-6400	.505 .530	.000 .000	272° 282°	225° 234°	112°
201282/294	RR-282/294 HYDRAULIC ROLLER	High performance use/bracket racing. Lopey idle. 2500 Stall. 9.5-10.5:1 compr. 3.90-4.11 axle ratio. Up to 780 CFM Carb.	3000-7000	.530 .550	.000 .000	282° 294°	234° 246°	110°

HYDRAULIC ROLLER CAMSHAFTS—DEEP HARDENED STEEL BILLET • V-8 305-350 cu. in. engines (1988-UP) small block

Part No. Cam Only	Grind No./Type	APPLICATION	RPM-Range	Valve Lift INT./EX.	Valve Lash Hot INT./EX.	ADV. Duration INT./EX.	.050 Duration INT./EX.	Lobe Center
211252/257	RR-252/257 HYDRAULIC ROLLER	Best overall cam for towing. Trucks, Vans, R.V., etc. Broad torque band. Good vacuum. 3.55-4:10 axle ratio. 9.5:1 compr. Computer compatible. Smooth idle.	1200-5000	.450 .465	.000 .000	252° 257°	204° 209°	112°
211257/265	RR-257/265 HYDRAULIC ROLLER	Excellent performance cam with good vacuum, good idle. 3.08-3.73 axle ratio, 9.5:1 compr. Up to 650 CFM Carb. Computer compatible. Stock converter.	1400-5600	.465 .485	.000 .000	257° 265°	209° 217°	112°
211265/272	RR-265/272 HYDRAULIC ROLLER	Good mid-range power. Good vacuum & good idle. 3.23-3.70 axle ratio. 9.5-10.5:1 compr. Computer compatible with stage 1 chip. Stock converter. Up to 650 CFM Carb.	2000-6000	.485 .505	.000 .000	265° 272°	217° 225°	112°
211272/282	RR-272/282 HYDRAULIC ROLLER	Good all around performance. Good idle & vacuum. 3.70-4.11 axle ratio. 9.5-10.5:1 compr. Computer compatible with stage 1 or 2 chip. Stock converter.	2500-6400	.505 .530	.000 .000	272° 282°	225° 234°	112°
211282/294	RR-282/294 HYDRAULIC ROLLER	High performance use/bracket racing. Lopey idle. 2500 Stall. 9.5-10.5:1 compr. 3.90-4.11 axle ratio. Up to 780 CFM Carb.	3000-7000	.530 .550	.000 .000	282° 294°	234° 246°	110°

HYDRAULIC ROLLER CAMSHAFTS—DEEP HARDENED STEEL BILLET • V-8 305-350 cu. in. engines LT-1 small block (1992-96)

Part No. Cam Only	Grind No./Type	APPLICATION	RPM-Range	Valve Lift INT./EX.	Valve Lash Hot INT./EX.	ADV. Duration INT./EX.	.050 Duration INT./EX.	Lobe Center
261252/257	RR-252/257 HYDRAULIC ROLLER	Best overall cam for towing. Trucks, Vans, R.V., etc. Broad torque band. Good vacuum. 3.55-4:10 axle ratio. 9.5:1 compr. Computer compatible. Smooth idle.	1200-5000	.450 .465	.000 .000	252° 257°	204° 209°	112°
261257/265	RR-257/265 HYDRAULIC ROLLER	Excellent performance cam with good vacuum, good idle. 3.08-3.73 axle ratio, 9.5:1 compr. Up to 650 CFM Carb. Computer compatible. Stock converter.	1400-5600	.465 .485	.000 .000	257° 265°	209° 217°	112°
261265/272	RR-265/272 HYDRAULIC ROLLER	Good mid-range power. Good vacuum & good idle. 3.23-3.70 axle ratio. 9.5-10.5:1 compr. Computer compatible with stage 1 chip. Stock converter. Up to 650 CFM Carb.	2000-6000	.485 .505	.000 .000	265° 272°	217° 225°	112°
261272/282	RR-272/282 HYDRAULIC ROLLER	Good all around performance. Good idle & vacuum. 3.70-4.11 axle ratio. 9.5-10.5:1 compr. Computer compatible with stage 1 or 2 chip. Stock converter.	2500-6400	.505 .530	.000 .000	272° 282°	225° 234°	112°
261282/294	RR-282/294 HYDRAULIC ROLLER	High performance use/bracket racing. Lopey idle. 2500 Stall. 9.5-10.5:1 compr. 3.90-4.11 axle ratio. Up to 780 CFM Carb.	3000-7000	.530 .550	.000 .000	282° 294°	234° 246°	110°